

GAJAH GALLERY YOGYAKARTA PRESENTS**If Time Stopped: Group Exhibition****17 AUGUST - 11 SEPTEMBER 2016****Jalan Bugisan Selatan, Komplek Pertokoan Aruna, Keloran
Bantul, Yogyakarta 55182**

Gajah Gallery Yogyakarta is delighted to present *If Time Stopped*; a group exhibition showcasing some of Indonesian contemporary art's most promising talent. Featuring **Afdhal, Riri Suheri, Dery Pratama, Taufik Ermas, Erizal As, Risman Marah** and **Loli Rusman**, *If Time Stopped* links these brilliant artists with a common thread: the inescapable ephemerality of time within the realm of art - from the artist's process to the viewer's experience. These works betray a sense of impermanence deftly captured by the artists in various manifestations, forming the beating heart of this exhibition. Renowned art critic **Aminuddin TH Siregar** has written an essay to frame the artwork on display, which will be released on the opening night in a published catalog.

ABOUT THE ARTISTS

Afdhal experiments with non-traditional combinations of materials – sponge and paint. He creates figurative sculptures without faces postured as if deep in thought. Affected by many conflicts of life, Afdhal's artworks are acutely self-aware and beckoning, fixated with the inherent qualities of living.

Riri Suheri's inspiring work gave the exhibition its name. An emerging contemporary artist, Suheri's graphic artwork, riddled with digital text and numbers, exudes an expressivity unique to his practice. The young artist's works also speak to his acute sensitivity to colour.

Dery Pratama transforms everyday objects, playing with composition, space and colour to create aesthetically pleasing yet thought-provoking works. His *Deboss* triptych reinvigorates car-plates with repoussé alphanumeric codes, bringing life to the mundane and discarded.

Taufik Ermas' haunting works explore the human body in its different forms. Dividing his practice between sculpture and painting, Ermas' paintings showcase his penchant for subtlety, adding another dimension to his ever-expanding oeuvre.

Erizal As paints portraits of faceless figures, adopting aggressive brushstrokes that underscore emotion and expressiveness. Chaotic yet evocative, Erizal's portraiture marks a progression from his earlier works; an artist growing and evolving with each exhibition.

Risman Marah's black and white photography combines poetry with dramatism. The skilled photographer eliminates extensive use of colour to focus on the mood and atmosphere conveyed through his photographs, cajoling the viewer into another world.

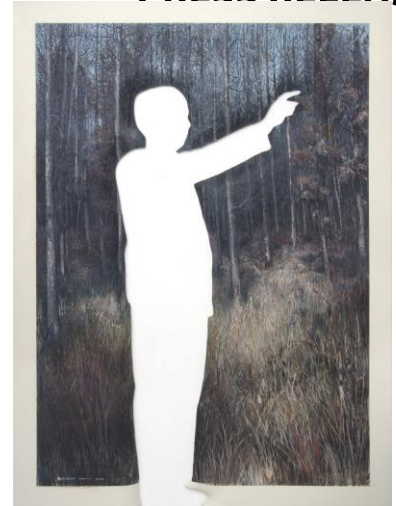
Loli Rusman is a rising artist whose dynamic abstract expressionist works elicit both a sense of excitement and serenity. The marriage of explosive and pensive strokes on each canvas characterizes her practice; a distinguishing feature of the native artist's work.



Afdhal, 2016
Menatap Putih, sponge and
silicon rubber
150 x 50 x 50 cm



Riri Suheri, 2016
Extra Time, acrylic and rubber on
canvas
180 x 150 cm



Taufik Ermas, 2016
*Space of Dialectic Series the End of
Beginning*, acrylic on canvas
200 x 150 cm



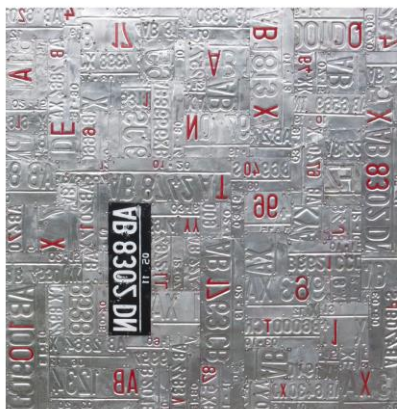
Erizal As, 2015
Faceless Series, acrylic on canvas
200 x 150 cm



Risman Marah, 2016
Negeri Seribu Dewa, photo
print on canvas
150 x 105 cm



Loli Rusman, 2015
Rainbow Jasmine, acrylic on canvas
150 x 150 cm



Dery Pratama, 2016, *Deboss Series Identity*, aluminum plate, 122 x 122cm each (3 plates)

ABOUT GAJAH GALLERY

We are a Singapore-based contemporary art gallery dedicated to regional artists, with a particular focus on Indonesian art. Our program includes premier exhibitions held throughout the year, curated by the art world's leading academics. In addition to promoting artists on an international platform, we strive to ignite critical discourse in the contemporary art community by engaging in collaborative endeavors with local universities and private institutions.

Located adjacent to the gallery, Yogya Art Lab (YAL) is a major initiative launched by the gallery in 2012, that produces some of Southeast Asia's finest sculptural works in collaboration with internationally acclaimed artists and local artisans. The foundry and production house have been instrumental in contributing to the growth of several of the biggest names in Indonesian art today, while continually providing greater visibility to the deserving artists of Southeast Asia.

For images, interviews and other media enquiries, contact:

Therese Pang

+65 6737 4202

therese@gajahgallery.com